

Stan Ward
atty

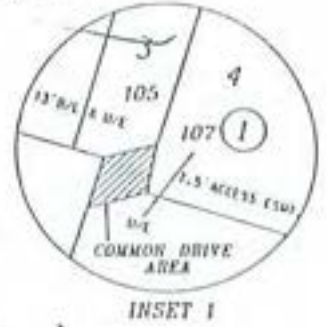
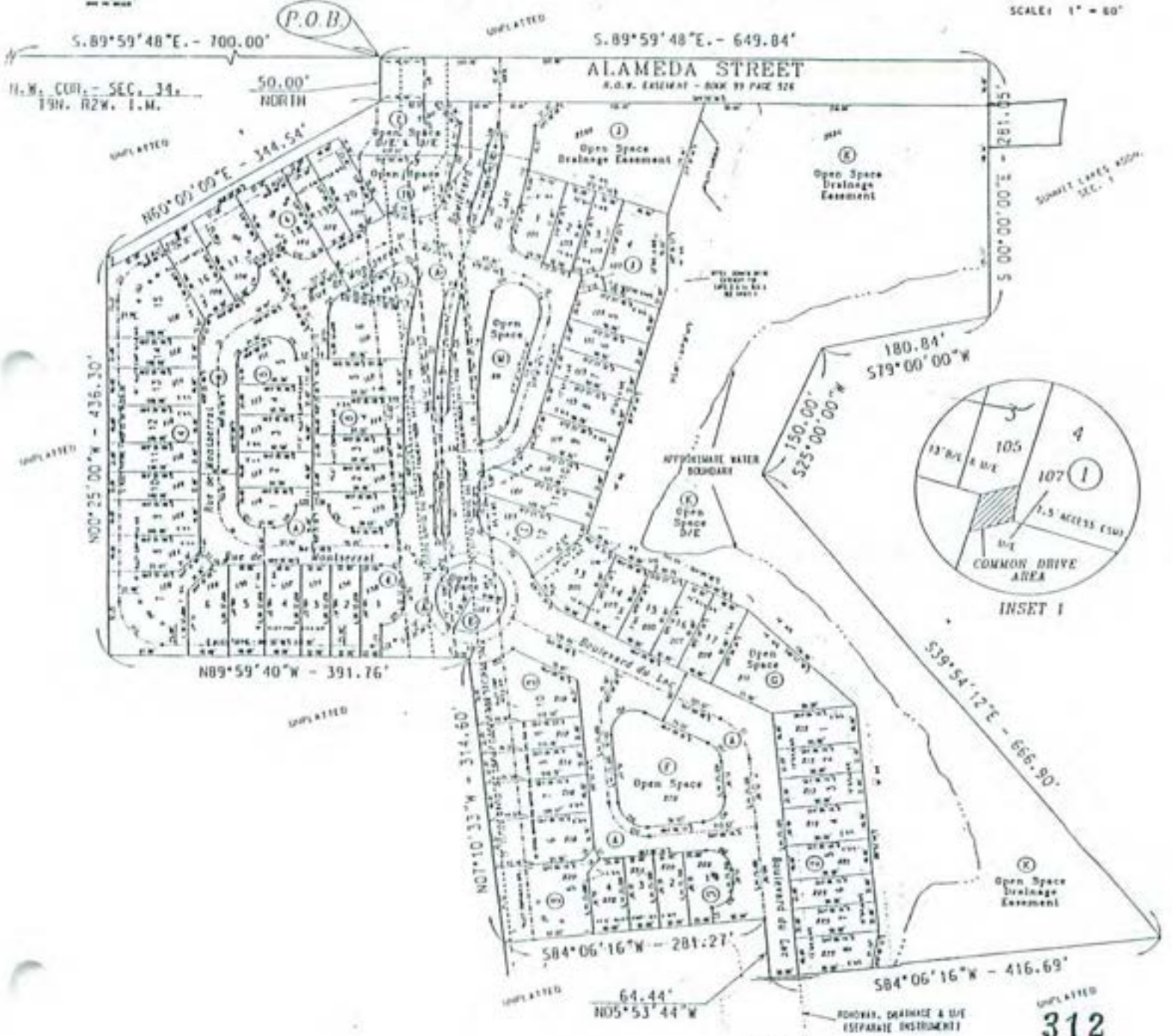


FINAL PLAT SUMMIT LAKE VILLAS, SECTION 1

A PLANNED UNIT DEVELOPMENT
BEING A PART OF THE WEST 1/2, SEC. 34, T09N - R2W, I.M.
NORMAN, CLEVELAND COUNTY, OKLAHOMA



SCALE: 1" = 80'



ROADS, DRAINAGE & UTILITY EASEMENTS