

# FINAL PLAT

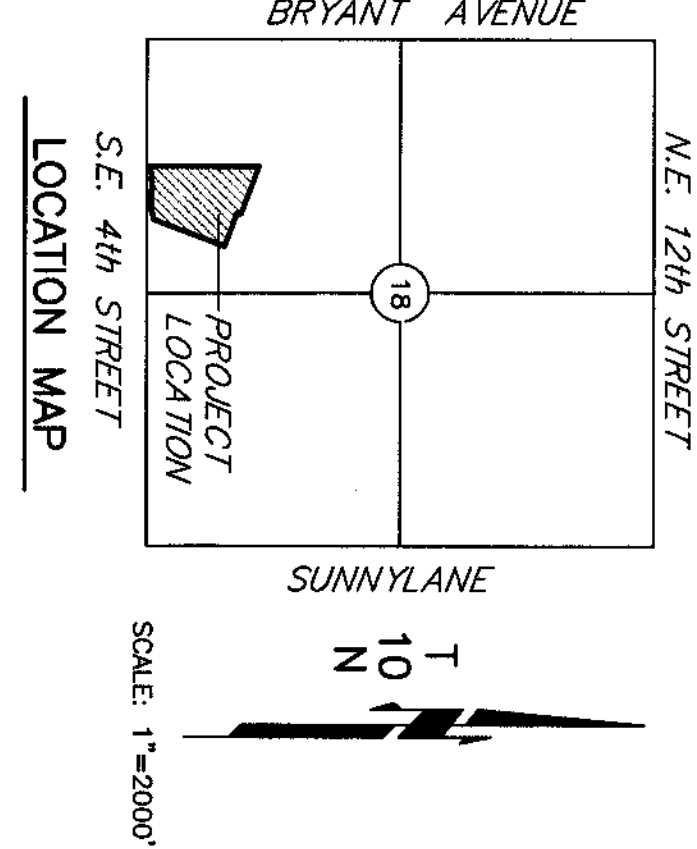
## OLDF STONEBRIDGE ADDITION SECTION 5

### A PART OF THE E. 1/2, S.W. 1/4, SECTION 18, T10N, R2W, I.M. MOORE, CLEVELAND COUNTY, OKLAHOMA

#### LEGAL DESCRIPTION

A tract of land being part of the East Half (E/2), Southwest Quarter (SW/4) of Section 18, Township 10 North (T10N), Range 2 West (R2W) of the Indian Meridian the City of Moore, Cleveland County, Oklahoma, being more particularly described as follows:  
COMMENCING at the Southeast Corner of the Southwest Quarter (SW/4) of said Section 18;  
THENCE South 89 degrees 23 minutes 14 seconds West a distance of 764.17 feet to a point;  
THENCE South 00 degrees 00 minutes 00 seconds West a distance of 85.39 feet to THE POINT OF BEGINNING;  
THENCE South 78 degrees 04 minutes West a distance of 129.49 feet to a point;  
THENCE South 89 degrees 23 minutes 14 seconds West a distance of 150.00 feet to a point;  
THENCE North 79 degrees 18 minutes 11 seconds West a distance of 50.99 feet to a point;  
THENCE South 89 degrees 23 minutes 14 seconds West a distance of 90.61 feet to a point;  
THENCE South 86 degrees 24 minutes 28 seconds West a distance of 59.42 feet to a point;  
THENCE South 78 degrees 04 minutes 38 seconds West a distance of 79.46 feet to a point;  
THENCE North 00 degrees 05 minutes 39 seconds West a distance of 1133.94 feet to a point;  
THENCE South 69 degrees 28 minutes 27 seconds East a distance of 544.56 feet to a point;  
THENCE South 20 degrees 38 minutes 52 seconds West a distance of 40.03 feet to a point;  
THENCE South 69 degrees 28 minutes 27 seconds East a distance of 380.09 feet to a point;  
THENCE South 20 degrees 31 minutes 33 seconds West a distance of 789.40 feet to the POINT OF BEGINNING, containing square feet or 15.32 acres more or less, and subject to all easements and rights of way of record.

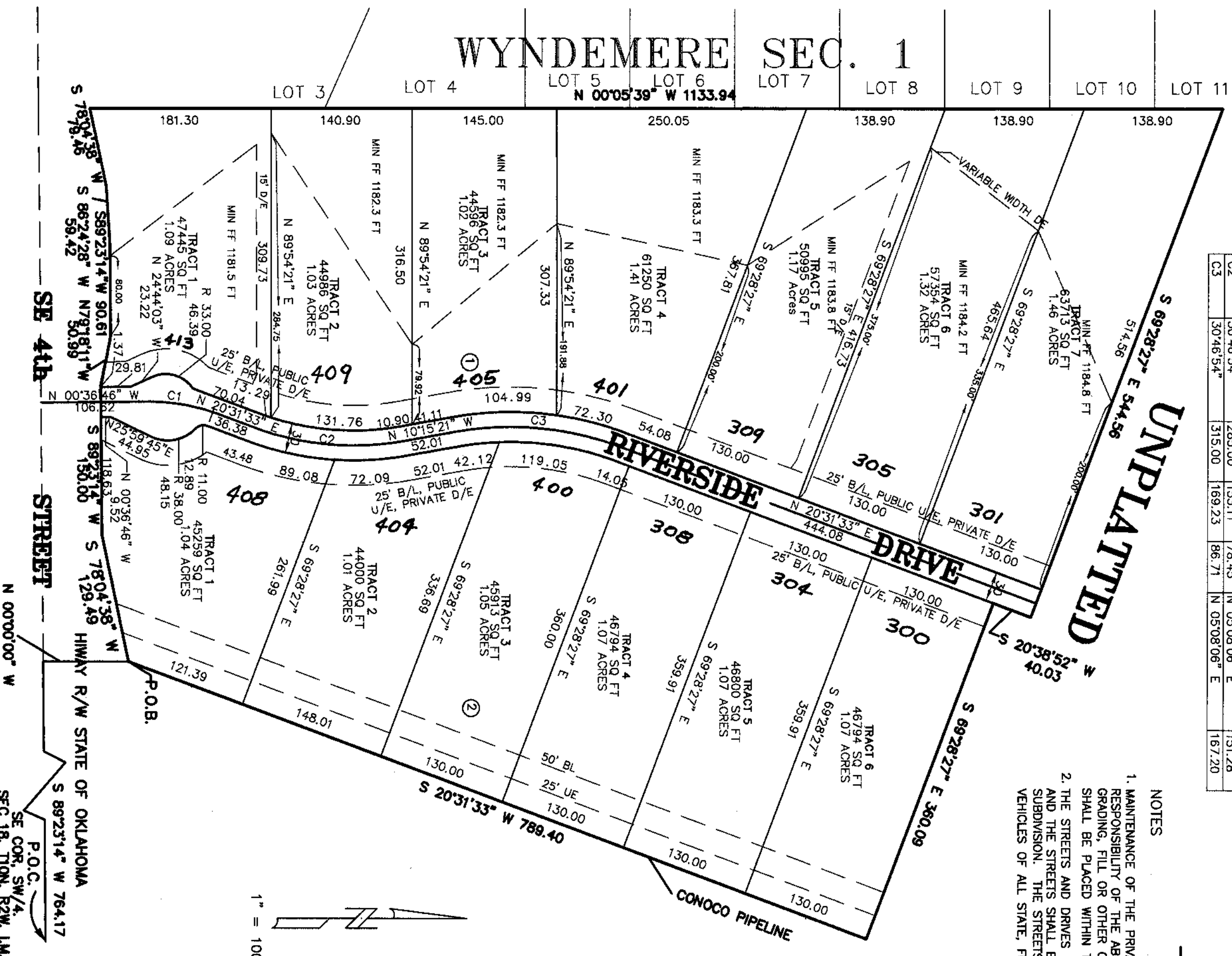
NUMBER	AC	AL	T	CD	LC	
C1	203.34	73.00	36.90	N.100°07'26" E	72.61	
C2	307.46	125.00	153.11	N.78°45' N.05°08'08" E	151.78	
C3	307.46	154.00	169.23	86.71	N.05°08'08" E	167.20



Doc# 2003 42  
Bk# 19 172  
Filed: 07-25-2003  
02:06:26 PM  
P.O.B.  
Cleveland County, OK  
PL

#### NOTES

1. MAINTENANCE OF THE PRIVATE DRAINAGE EASEMENTS SHOWN ON THE PLAT SHALL BE THE RESPONSIBILITY OF THE ABUTTING PROPERTY OWNERS. NO STRUCTURES STORAGE OF MATERIAL OR OTHER OBSTRUCTIONS SHALL BE PLACED WITHIN THE PRIVATE DRAINAGE EASEMENTS.
2. THE STREETS AND DRIVES IN THIS SUBDIVISION HAVE NOT BEEN DEDICATED TO THE PUBLIC AND THE STREETS SHALL BE MAINTAINED BY THE PRIVATE PROPERTY OWNERS WITHIN THIS SUBDIVISION. THE STREETS SHALL ADHERE TO THE POLICE, FIRE, AND OTHER OFFICIAL VEHICLES OF ALL STATE, FEDERAL, COUNTY AND MUNICIPAL AGENCIES.



NOTE: THE UNIT OF MEASUREMENT SHOWN FOR ALL DIMENSIONS ON THE FINAL PLAT IS FEET.

FILED FOR RECORD  
STATE OF OKLAHOMA  
COUNTY OF CLEVELAND  
DORINDA HARVEY, County Clerk  
Deputy  
July 25, 2003 at 2:06 PM

#### OWNER'S CERTIFICATE AND DEDICATION

OWNERS ALL MEN BY THESE PRESENTS:  
That we the undersigned, CONTINENTAL JOINT VENTURES CORP., an Oklahoma Corporation and Mark Cox, do hereby certify that we are the owners of and the only person or persons, corporation or corporations having any right, title or interest in the land shown on the annexed plat of OLDF STONEBRIDGE ADDITION SECTION 5, a subdivision of a part of the E. 1/2, S.W. 1/4, Section 18, T10N, R2W, of the Indian Meridian to Moore, Cleveland County, Oklahoma, and have caused the said premises to be surveyed and platted into lots, blocks, streets and easements as shown on said annexed plat, said annexed plat represents a correct survey of all property included therein and is hereby adopted as the plat of land under the name of OLDF STONEBRIDGE ADDITION SECTION 5, CONTINENTAL JOINT VENTURES CORP. and MARK COX, dedicating all private highways and public easements as shown on said annexed plat to the public for private highways, streets, and drainage easements, and public utility easements, for themselves, their successors and assigns forever and have caused the same to be released from all rights, easements, and encumbrances except as shown on the Banded Abstractor's Certificate.  
In Witness Whereof the Banded Abstractor has Certified.  
Continental Joint Ventures Corp., an Oklahoma Corporation  
25<sup>th</sup> day of July, 2003.

#### ATTEST:

Mark R. Colton  
PRESIDENT  
MARK COX

#### STATE OF OKLAHOMA

County of Cleveland s.s.  
Before me, the undersigned, a Notary Public in and for said County and State, on this 25<sup>th</sup> day of July, 2003 personally appeared Charles Colton as president of CONTINENTAL JOINT VENTURES CORP., and Mark Cox to me known to be the identical persons who executed the within and foregoing instrument and acknowledged to me that they executed the same as their free and voluntary act and deed and as the free and voluntary act and deed of CONTINENTAL JOINT VENTURES CORP., and Mark Cox for the uses and purposes therein set forth.  
Given under my hand and seal the day and year last above written.  
My Commission Expires: 3-17-05  
Shelly Beatty  
NOTARY PUBLIC

#### BONDED ABSTRACTOR'S CERTIFICATE

The undersigned, duly qualified abstractor in and for said County and State, hereby certifies that according to the records of said County, title to the land shown on the annexed plat of OLDF STONEBRIDGE ADDITION SECTION 5, a subdivision of a part of the E. 1/2, S.W. 1/4, Section 18, T10N, R2W, of the I.M. to Moore, Cleveland County, Oklahoma appears to be vested in CONTINENTAL JOINT VENTURES CORP. an Oklahoma Corporation, and Mark Cox, a single person on this 27<sup>th</sup> day of July, 2003 unencumbered by pending actions, judgments, liens, taxes or other encumbrances except minerals previously conveyed and mortgages of record.  
Executed this 25<sup>th</sup> day of July, 2003.  
FIRST AMERICAN TITLE & TRUST COMPANY

#### ATTEST:

Steve Colner, VICE PRESIDENT

#### CERTIFICATE OF APPROVAL

I, Lawrence Woodard, Chairman of the Planning Commission of the City of Moore, Oklahoma, hereby certify that the said Planning Commission approved the final plat of OLDF STONEBRIDGE ADDITION SECTION 5, Moore, Cleveland County, Oklahoma, this 14<sup>th</sup> day of January, 2003.  
Lawrence Woodard  
CHAIRMAN, Lawrence Woodard

#### ACCEPTANCE OF DEDICATIONS

Be it resolved by the City Council of the City of Moore, Oklahoma that the dedications shown on the annexed plat of OLDF STONEBRIDGE SECTION 5, Moore, Oklahoma are hereby accepted.  
Signed by the Mayor of the City of Moore, Oklahoma this 23<sup>rd</sup> day of July, 2003.  
Glenn Lewis  
MAYOR, Glenn Lewis

#### ATTEST:

Priscilla Hargis  
CITY CLERK, Priscilla Hargis

#### CERTIFICATE OF CITY CLERK

I, Priscilla Hargis, City Clerk of the City of Moore, Oklahoma, hereby certify that I have examined the records of said City and find that all deferred payments on unmatrued installments have been paid in full and that there is no special assessment procedure now pending against the land on the annexed plat of OLDF STONEBRIDGE ADDITION SECTION 5 to the City of Moore, Oklahoma.  
Signed by the City Clerk on this 23<sup>rd</sup> day of July, 2003.  
Priscilla Hargis  
CITY CLERK, Priscilla Hargis

#### COUNTY TREASURER'S CERTIFICATE

I, Sandra Desjans, hereby certify that I am the duly elected and acting County Treasurer of Cleveland County, State of Oklahoma, that the tax records of said County show all taxes paid for the year 2002 and all prior years on the land shown on the annexed plat of OLDF STONEBRIDGE SECTION 5, an addition to the City of Moore, Cleveland County, Oklahoma that the required statutory security has been deposited in the office of the County Treasurer, guaranteeing payment of current years taxes.  
IN WITNESS WHEREOF, said County Treasurer has caused this instrument to be executed at Moore, Oklahoma on this 25<sup>th</sup> day of July, 2003.  
Sandra Desjans  
COUNTY TREASURER, Sandra Desjans

#### REGISTERED LAND SURVEYOR

I, Allen E. Henry, a Registered Land Surveyor in the State of Oklahoma, hereby certify that the annexed plat consisting of one sheet correctly represents a survey made under my supervision on the 22<sup>nd</sup> day of July, 2003. Boundary Monuments shown thereon have been correctly and accurately placed and exist in the position so shown.  
Allen E. Henry, REGISTERED LAND SURVEYOR No. 1335

#### STATE OF OKLAHOMA

County of Oklahoma s.s.  
Before me, the undersigned, a Notary Public in and for said County and State on this 22<sup>nd</sup> day of July, 2003, personally appeared Allen E. Henry to me known to be the identical person who executed the within and foregoing instrument and acknowledged to me that he executed the same as his free and voluntary act and deed for the uses and purposes therein set forth.  
Given under my hand and seal the day and year last above written.  
My Commission Expires: 3/5/05  
Kenneth L. Stearns  
NOTARY PUBLIC