

OWNER'S CERTIFICATE AND DEDICATION
KNOW ALL MEN BY THESE PRESENTS:
THAT, LANDMAX DEVELOPMENT CO., LLC, AN OKLAHOMA LIMITED LIABILITY COMPANY, DOES HEREBY CERTIFY THAT IT IS THE ONLY PERSON, FIRM, OR CORPORATION HAVING ANY RIGHT, TITLE OR INTEREST IN AND TO THE LAND SHOWN ON THE ANNEXED PLAT, AND THAT THEY HAVE CAUSED THE SAME TO BE SURVEYED AND PLATTED, AND THAT THEY HEREBY DEDICATE ALL THE STREETS AND EASEMENTS SHOWN HEREON TO THE PUBLIC FOR THE PURPOSES OF STREETS, UTILITIES AND DRAINAGE FOR THEIR HIRERS, EXECUTORS, ADMINISTRATORS, SUCCESSORS AND ASSIGN FOREVER, AND HAVE CAUSED THE SAME TO BE RELEASED FROM ALL ENCUMBRANCES SO THAT THE TITLE IS CLEAR, EXCEPT AS SHOWN IN THE ASTRACTOR'S CERTIFICATE. AFTER INITIAL INSTALLATION OF ELECTRIC, TELEPHONE, CABLE, AND GAS LINES, ANY DUPLICATE LINES, INCLUDING TRANSFORMERS AND PEDESTALS, MUST BE INSTALLED COMPLETELY UNDERGROUND.

IN WITNESS WHEREOF, THE UNDERSIGNED HAVE CAUSED THIS INSTRUMENT TO BE EXECUTED THIS DAY OF December 20, 2007. COVENANTS, RESERVATIONS AND RESTRICTIONS FOR THIS ADDITION ARE CONTAINED IN A SEPARATE INSTRUMENT.
LANDMAX DEVELOPMENT CO., LLC.
HENRI BUI, MANAGER

STATE OF OKLAHOMA
COUNTY OF Oklahoma
SS: Henri Bui
HENRI BUI, MANAGER

MY COMMISSION EXPIRES: None
NOTARY PUBLIC

LEGAL DESCRIPTION
TRACT A
A TRACT OF LAND BEING A PART OF THE SOUTHWEST QUARTER (SW/4) OF SECTION EIGHTEEN (18), TOWNSHIP TEN (10) NORTH, RANGE TWO (2) WEST OF THE INDIAN MERIDIAN, CITY OF MOORE, CLEVELAND COUNTY, OKLAHOMA, BEING MORE PARTICULARLY DESCRIBED AS FOLLOWS:
COMMENCING AT THE SOUTHEAST CORNER OF THE SOUTHWEST QUARTER (SW/4) OF SAID SECTION 18;
THENCE NORTH 00°18'20" EAST A DISTANCE OF 1495.00 FEET TO A POINT;
THENCE SOUTH 89°50'25" WEST A DISTANCE OF 550.02 FEET TO A POINT;
THENCE NORTH 00°18'20" EAST A DISTANCE OF 518.57 FEET TO THE POINT OF BEGINNING;
THENCE NORTH 00°18'20" EAST A DISTANCE OF 356.28 FEET TO A POINT;
THENCE NORTH 21°29'45" WEST A DISTANCE OF 188.48 FEET TO A POINT;
THENCE SOUTH 89°41'40" EAST A DISTANCE OF 70.00 FEET TO A POINT;
THENCE NORTH 00°18'20" EAST A DISTANCE OF 41.20 FEET TO A POINT;
THENCE NORTH 89°08'43" WEST A DISTANCE OF 333.72 FEET TO A POINT;
THENCE SOUTH 00°18'20" WEST A DISTANCE OF 529.22 FEET TO A POINT;
THENCE SOUTH 89°41'40" EAST A DISTANCE OF 212.04 FEET TO A POINT;
THENCE AROUND A CURVE TO THE LEFT THROUGH A CENTRAL ANGLE OF 45°22'15" ON AN ARC DISTANCE OF 79.21 FEET A CHORD BEARING OF SOUTH 48°58'58" EAST A DISTANCE OF 77.41 FEET TO A POINT;
THENCE SOUTH 71°42'28" EAST A DISTANCE OF 40.47 FEET TO A POINT;
THENCE AROUND A CURVE TO THE RIGHT THROUGH A CENTRAL ANGLE OF 23°45'31" AN ARC DISTANCE OF 29.73 FEET A CHORD BEARING OF NORTH 56°23'58" EAST A DISTANCE OF 29.82 FEET TO THE POINT OF BEGINNING, CONTAINING 4.03 ACRES MORE OR LESS AND SUBJECT TO ALL EASEMENTS AND RIGHTS OF WAY OF RECORD.

AND
TRACT B
A PART OF THE SOUTHWEST QUARTER SW/4, SECTION 18, TOWNSHIP 10 NORTH (T10N), RANGE 2 WEST (R2W) OF THE INDIAN MERIDIAN, CITY OF MOORE, CLEVELAND COUNTY, OKLAHOMA, BEING MORE PARTICULARLY DESCRIBED AS FOLLOWS:
COMMENCING AT THE SOUTHEAST CORNER OF SAID SOUTHWEST QUARTER (SW/4) OF SECTION 18;
THENCE NORTH 00°18'20" EAST A DISTANCE OF 2640.00 FEET TO A POINT;
THENCE NORTH 89°08'43" WEST A DISTANCE OF 550.02 FEET TO A POINT OF BEGINNING;
THENCE SOUTH 00°18'20" WEST A DISTANCE OF 263.69 FEET;
THENCE NORTH 89°08'43" WEST A DISTANCE OF 333.72 FEET;
THENCE NORTH 00°18'20" EAST A DISTANCE OF 50.78 FEET;
THENCE NORTH 89°59'41" WEST A DISTANCE OF 115.00 FEET;
THENCE NORTH 44°49'22" WEST A DISTANCE OF 307.14 FEET;
THENCE NORTH 89°08'43" WEST A DISTANCE OF 666.40 FEET TO THE POINT OF BEGINNING, CONTAINING 3.12 ACRES MORE OR LESS AND SUBJECT TO ALL EASEMENTS AND RIGHTS OF WAY OF RECORD.

LAND SURVEYOR'S CERTIFICATE
I, ROSS C. MORRIS, DO HEREBY CERTIFY THAT I AM A PROFESSIONAL REGISTERED LAND SURVEYOR, AND THAT THE ANNEXED PLAT CORRECTLY REPRESENTS A CAREFUL SURVEY MADE UNDER MY DIRECTION, AND THAT THE MONUMENTS SHOWN HEREON ACCURATELY EXIST AND THEIR POSITIONS ARE CORRECTLY SHOWN.
ROSS C. MORRIS, L.S. 1457

STATE OF OKLAHOMA
COUNTY OF Oklahoma
SS: Ross C. Morris
ROSS C. MORRIS, L.S. 1457

BONDED ABSTRACTOR'S CERTIFICATE
THE UNDERSIGNED, A DULY QUALIFIED AND LAWFULLY BONDED ABSTRACTOR OF TITLES, IN AND FOR THE COUNTY OF CLEVELAND, STATE OF OKLAHOMA, HEREBY CERTIFIES THAT THE RECORDS OF SAID COUNTY SHOW THAT THE TITLE TO THE LAND ON THE ANNEXED PLAT IS VESTED IN LANDMAX DEVELOPMENT CO., LLC, AN OKLAHOMA CORPORATION, THAT ON THE DAY OF December 20, 2007, THERE ARE NO ACTIONS PENDING OR JUDGMENTS OF ANY NATURE IN ANY COURT OR ON FILE WITH THE CLERK OF ANY COURT IN SAID COUNTY AND STATE AGAINST SAID LAND, OR THE OWNERS THEREOF, AND THAT THE TAXES ARE PAID FOR THE YEAR 2007, AND PRIOR YEARS, THAT THERE ARE NO OUTSTANDING TAX SALES CERTIFICATES AGAINST SAID LAND, AND NO TAX DEED ARE ISSUED TO ANY ONE PERSON, THAT THERE ARE NO LENS, MORTGAGES, OR OTHER ENCUMBRANCES OF ANY KIND AGAINST THE LAND INCLUDED IN THE ANNEXED PLAT, EXCEPT MORTGAGES, MINERALS, WATER RIGHTS AND EASEMENTS OF RECORD PREVIOUSLY RESERVED, EXCEPTED OR GRANTED.
IN WITNESS WHEREOF, SAID BONDED ABSTRACTOR HAS CAUSED THIS INSTRUMENT TO BE EXECUTED THIS DAY OF December 20, 2007.

FIRST AMERICAN TITLE & TRUST CO.
M.F. Carbert
VICE-PRESIDENT

COUNTY TREASURER'S CERTIFICATE
I, Sandra DeSalvo, DO HEREBY CERTIFY THAT I AM THE DULY ELECTED, QUALIFIED OR ACTING COUNTY TREASURER OF CLEVELAND COUNTY, STATE OF OKLAHOMA, THAT THE TAX RECORDS OF SAID COUNTY SHOW ALL TAXES ARE PAID FOR THE YEAR 2007, AND PRIOR YEARS ON THE LAND SHOWN ON THE ANNEXED PLAT, THAT THE REQUIRED STATUTOR SECURITY HAS BEEN DEPOSITED IN THE OFFICE OF THE COUNTY TREASURER, GUARANTEEING PAYMENT OF THE CURRENT YEARS TAXES.
IN WITNESS WHEREOF, SAID COUNTY TREASURER HAS CAUSED THIS INSTRUMENT TO BE EXECUTED AT CITY OF OKLAHOMA CITY, THIS DAY OF December 20, 2007.

Sandra DeSalvo
COUNTY TREASURER

CITY PLANNING COMMISSION APPROVAL
I, D. L. Stearns, CHAIRMAN OF THE CITY PLANNING COMMISSION FOR THE CITY OF MOORE, STATE OF OKLAHOMA, HEREBY CERTIFY THAT THE SAID COMMISSION DULY APPROVED THE REPEAT OF THE FINAL PLAT ON THE DAY OF December 20, 2007.

ACCEPTANCE OF DEDICATION OF CITY COUNCIL
BE IT RESOLVED BY THE COUNCIL OF THE CITY OF MOORE, OKLAHOMA, THAT THE DEDICATIONS SHOWN ON THE ANNEXED PLAT ARE HEREBY ACCEPTED. ADOPTED BY THE COUNCIL OF THE CITY OF MOORE, OKLAHOMA THIS DAY OF December 20, 2007.

ATTEST:
Jim Corbett
CITY CLERK

1, Jim Corbett, CITY CLERK OF THE CITY OF MOORE, STATE OF OKLAHOMA, HEREBY CERTIFY THAT I HAVE EXAMINED THE RECORDS OF SAID CITY AND FIND THAT ALL DEFERRED PAYMENTS OR UNPAID INSTALLMENTS UPON SPECIAL ASSESSMENTS HAVE BEEN PAID IN FULL AND THAT THERE IS NO SPECIAL ASSESSMENT PROCEDURE NOW PENDING AGAINST THE LAND SHOWN ON THE ANNEXED PLAT ON THE DAY OF December 20, 2007.

Vacation of Plat
Filed 1-30-2012
Bk 4962 Pg 925

OLDE STONEBRIDGE ADDITION SECTION 9
INCLUDING A REPEAT OF
OLDE STONEBRIDGE ADDITION SECTION 7
A PART OF THE NE/4 OF THE SW/4, SEC. 18, T10N, R2W, I.M.
CITY OF MOORE, CLEVELAND COUNTY, OKLAHOMA

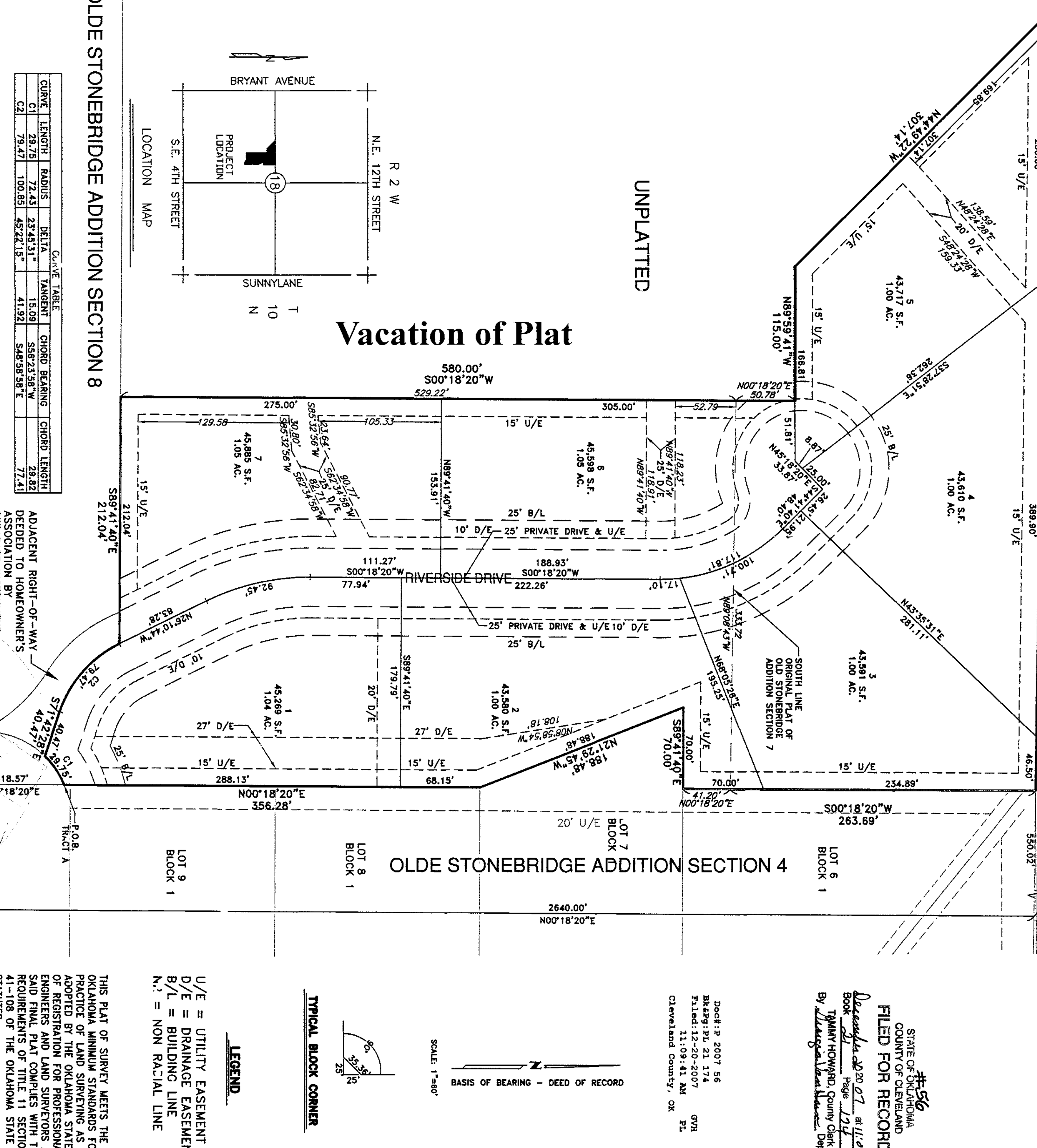
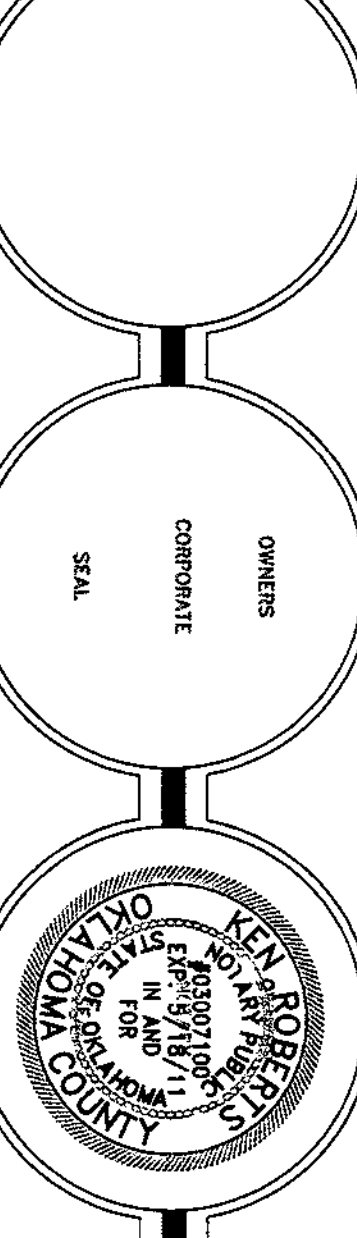


Table with 6 columns: CURVE, LENGTH, RADIUS, DELTA, CHORD BEARING, CHORD LENGTH. It lists data for two curves (C1 and C2) used in the plat.

FINAL PLAT OF TRACT 1
OLDE STONEBRIDGE ADDITION SECTION 9
INCLUDING A REPEAT OF
OLDE STONEBRIDGE ADDITION SECTION 7
A PART OF THE NE/4 OF THE SW/4, SEC. 18, T10N, R2W, I.M.
CITY OF MOORE, CLEVELAND COUNTY, OKLAHOMA

MORRIS
REGISTERED LAND SURVEYOR
617 N.W. 27th STREET
MOORE, OK 73160
(405) 912-2775
(405) 912-3322 FAX
CA 1020, EXP. 3-30-09

