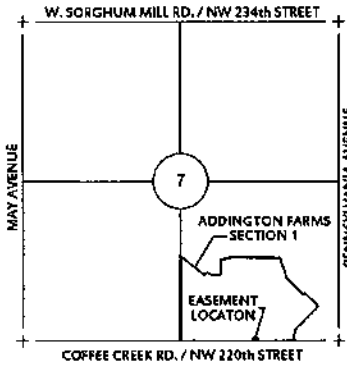


R 3 W

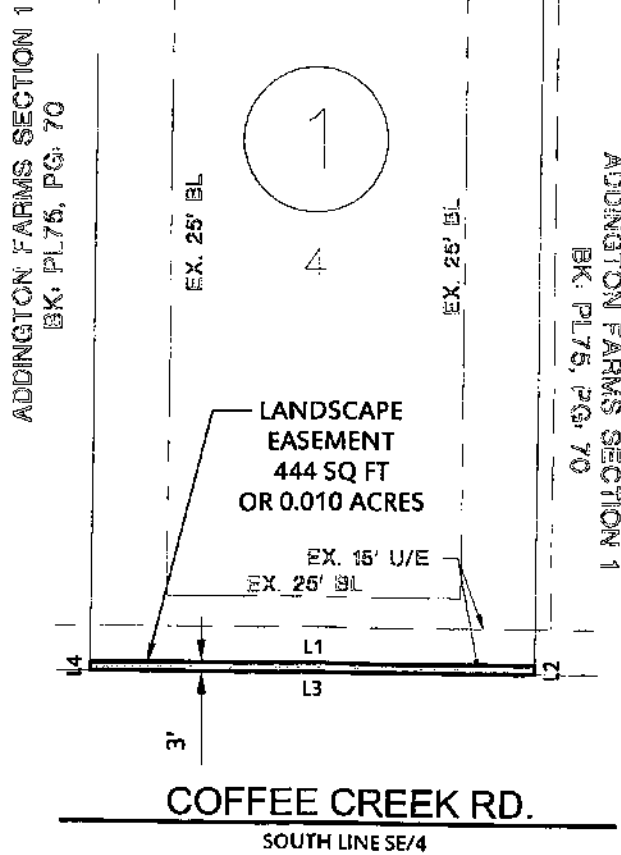
ADDINGTON FARMS SECTION 1
BK: PL75, PG: 70

NW 220th TERR.



LOCATION MAP
SCALE: 1" = 3000'

Line Table		
Line #	Direction	Length
L1	S89° 14' 44"E	148.00'
L2	S00° 45' 16"W	3.00'
L3	N89° 14' 44"W	148.00'
L4	N00° 45' 16"E	3.00'



SCALE: 1" = 60'

GRAPHIC SCALE IN FEET



BASIS OF BEARING = PLAT
ADDINGTON FARMS SECTION 1
BK: PL75, PG: 70

ATTACHMENT A

LANDSCAPE EASEMENT

300 Pointe Parkway Blvd.
Tulsa, Oklahoma 74399



405.787.6270 | 405.787.6276 | www.craftontull.com

SHEET NO.: 1 of 1
DATE: 10/01/18
PROJECT NO.: 14606000

LEGAL DESCRIPTION

A tract of land situate within the Southeast Quarter (SE/4) of Section Seven (7), Township Fourteen North (T14N), Range Three West (R3W), of the Indian Meridian (I.M.), Oklahoma County, Oklahoma, also being a part of Lot 4, Block 1, ADDINGTON FARMS SECTION 1, according to the recorded plat thereof; being more particularly described as follows:

The South 3.00 feet of said Lot 4.

Said tract contains 444 Sq Ft or 0.010 Acres, more or less.

